

US Army Corps
of Engineers
Omaha District

PLANS

WETLAND RESTORATION PROJECT

TENMILE CREEK

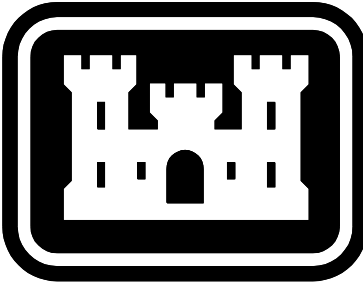
RIMINI, MONTANA

DESIGN
SEPTEMBER 2006

THIS PROJECT WAS DESIGNED BY THE OMAHA DISTRICT OF THE US ARMY CORPS OF ENGINEERS. THE INITIALS OR SIGNATURES AND REGISTRATION DESIGNATIONS OF INDIVIDUALS APPEAR ON THESE PROJECT DOCUMENTS WITHIN THE SCOPE OF THEIR EMPLOYMENT AS REQUIRED BY ER 1110-1-8152.

THE FOLLOWING SIGNATURES BELOW INDICATE OFFICIAL APPROVAL OF ALL DRAWINGS IN THIS SET DATED _____

SUBMITTED BY:	RA
CHIEF:	ARCH SECTION
SUBMITTED BY:	PE
CHIEF:	CIVIL SECTION
SUBMITTED BY:	PE
CHIEF:	ELECT SECTION
SUBMITTED BY:	PE
CHIEF:	ENVIR SECTION
SUBMITTED BY:	PE
CHIEF:	MECH SECTION
SUBMITTED BY:	PE
CHIEF:	PLANS/SPECS SECTION
SUBMITTED BY:	PE
CHIEF:	STRUCT/INTER SECTION
SUBMITTED BY:	PE
CHIEF:	GEO SECTION



US Army Corps
of Engineers
Omaha District

MATCHLINE 1 - SEE SHEET B2.02



NOTE:

1. The horizontal control datum for the field survey is NAD83 Montana State Plane 83 Zone 2500. The vertical control datum for the field survey is NAVD88. The horizontal and vertical values were established by a Static GPS session (10M) and adjusted by NGS resulting in an OPUS solution. The combined factor is 0.999188574.

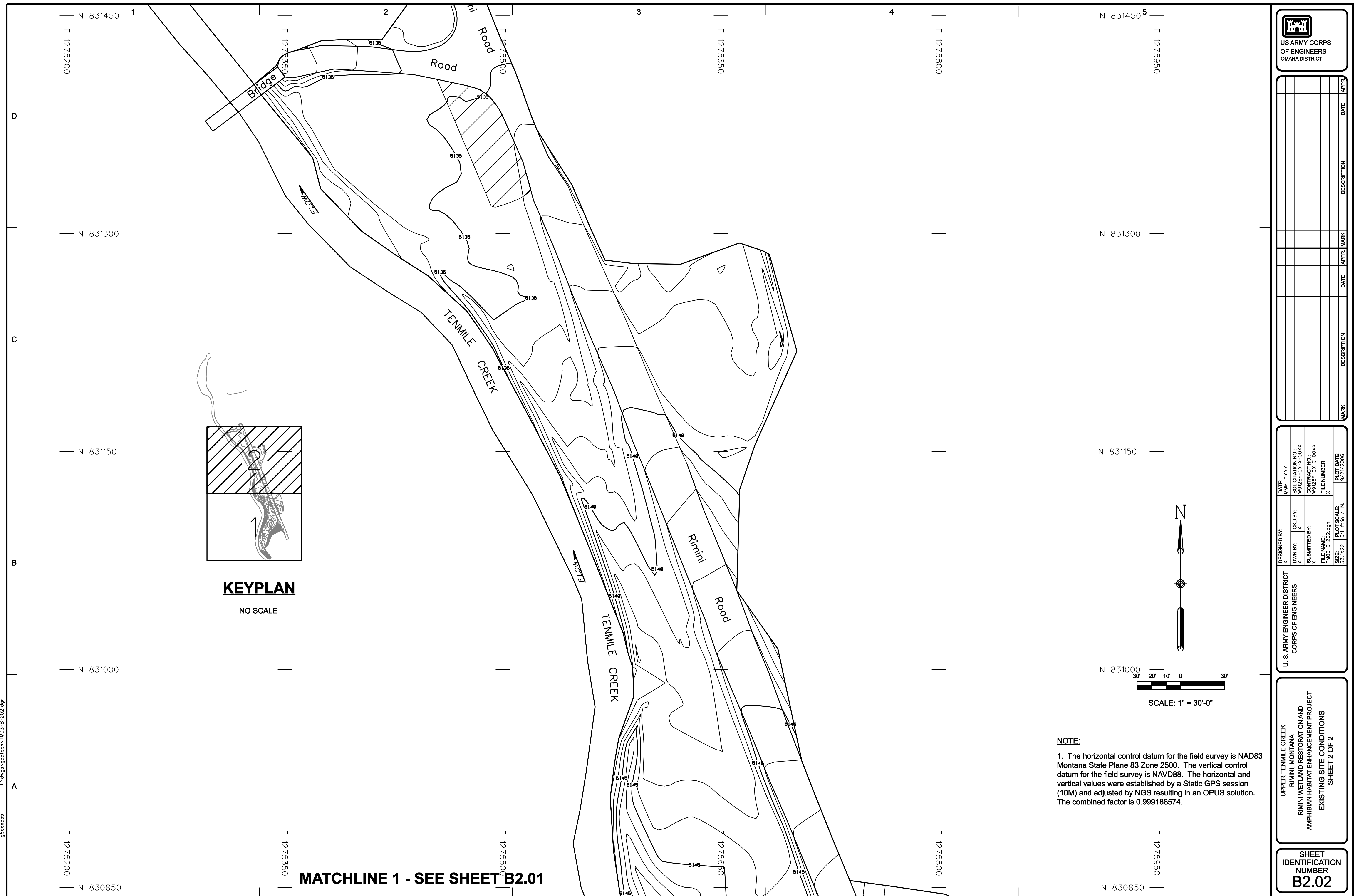
UPPER TENMILE CREEK
RIMINI, MONTANA
RIMINI WETLAND RESTORATION AND
AMPHIBIAN HABITAT ENHANCEMENT PROJECT
EXISTING SITE CONDITIONS
SHEET 1 OF 2

**SHEET
IDENTIFICATION
NUMBER
B2.01**

U. S. ARMY ENGINEER DISTRICT
CORPS OF ENGINEERS

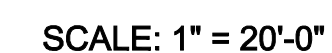
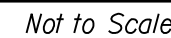
DESIGNED BY:		DATE:	MM/YY
DWN BY:	X	CKD BY:	X
SUBMITTED BY:	X	SOLICITATION NO.:	W912BF-0X-C-00XX
FILE NAME:	TM03-B-201.dgn	CONTRACT NO.:	W912BF-0X-C-00XX
SIZE:	2.72	FILE NUMBER:	X
PLOT SCALE:	1:1	PLOT DATE:	

[illegible]





Not to Scale



SHEET
IDENTIFICATION
NUMBER
H2.01



Not to Scale

C

SHEET
IDENTIFICATION
NUMBER
H2.02

