

Memorandum for Record

To: Justin Reale, Environmental Engineering Section (EC-GE)

From:

Santiago Gallegos, Environmental Engineering Section (EC-GE)

John Stomp, Environmental Engineering Section (EC-GE)

Donnie Kelly, Environmental Engineering Section (EC-GE)

Date: 18 June 2019

Subject: Environmental conditions site visit for the proposed aquatic restoration on the Rio Chama below Abiquiu Dam.

On June 14, 2019, members of the Environmental Engineering Branch (Donnie Kelly, John Stomp, and Santiago Gallegos) traveled to Abiquiu Dam in support of Environmental Engineering's portion of the Environmental Assessment for the Rio Chama Aquatic Habitat Restoration Project.

The team departed from the Albuquerque District Office at 0630 and arrived at Abiquiu Dam at approximately 0830. Prior to driving to the proposed project site, the team checked in with John Mueller, Abiquiu Dam Project Manager. Upon arrival to the site, the team examined the drawings provided by Riverbend Engineering, LLC. The drawings identified the proposed construction limits and three staging areas (**Figure 1**).

Solid waste such as plastic bottles, bags, cups and glass were discovered in low concentrations along the Rio Chama. The waste was either deposited by the wind or by the users of the trail and observation areas. Most of this waste was contained in the picnicking/wildlife viewing areas. Further findings in these areas were garbage receptacles, one restroom, picnic tables, shade structures and signage. Additionally, when walking the site, some small (~2 feet in diameter) hand-made fire pits were discovered along the river. The fire pits did contain ashes, but they were all extinguished. In the event of a flood event that inundates this land, waste and/or the extinguished ashes could potential pose a threat by entering the river. Also, in the road along the river, which is an earthen road, tire tracts we observed indicating vehicular traffic. The deepest tracts were approximately 6 inches deep into the road. Site visit photos are provided in Appendix A.

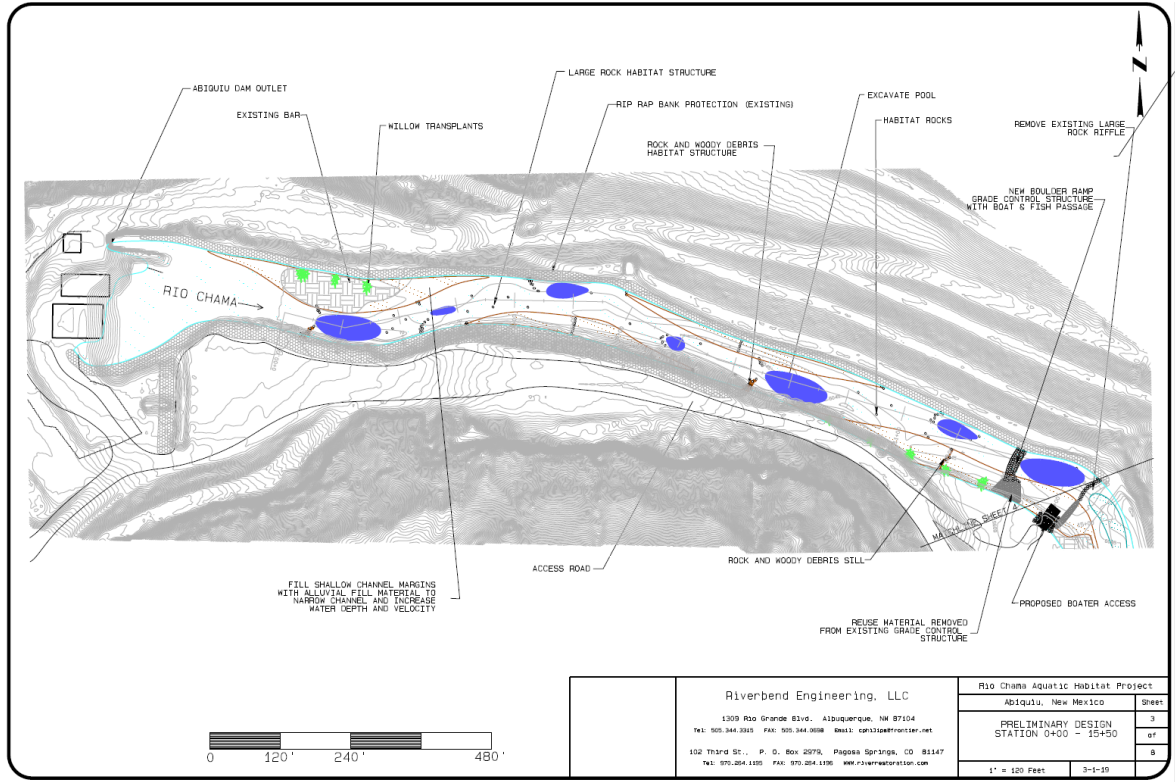


Figure 1: Overview of the proposed restoration project on the Rio Chama downstream of Abiquiu Dam (Riverbend Engineering, LLC. 2019)