

**US Army Corps
of Engineers**

Albuquerque District
4101 Jefferson Plaza Northeast
Albuquerque, New Mexico 87109

Public Notice

SUBJECT: U.S. Army Corps of Engineers Regulatory Program Designation of Albuquerque District as Lead District for the Navajo Nation

Effective September 8, 2022, the U.S. Army Corps of Engineers (Corps), Albuquerque District, will administer the Corps' Regulatory Program within the boundaries of the Navajo Nation (NN). Applications, inquiries, and requests should be submitted to SPA-RD-NN@usace.army.mil

BACKGROUND:

The NN is the largest Indian reservation in the United States, covering approximately 17,000,000 acres (27,000 square miles). It is primarily located in northwestern New Mexico and northeastern Arizona, with a portion also extending into Utah. The NN reservation overlaps Albuquerque District (SPA), Los Angeles District (SPL), and the Sacramento District (SPK). To improve communications, increase consistency, and streamline CWA Section 404 permitting and 401 WQC certification coordination and processes, SPA will be the lead District and sole point of contact for Regulatory permit reviews, and compliance and enforcement. **SPL will continue to review all Arizona Department of Transportation actions.**

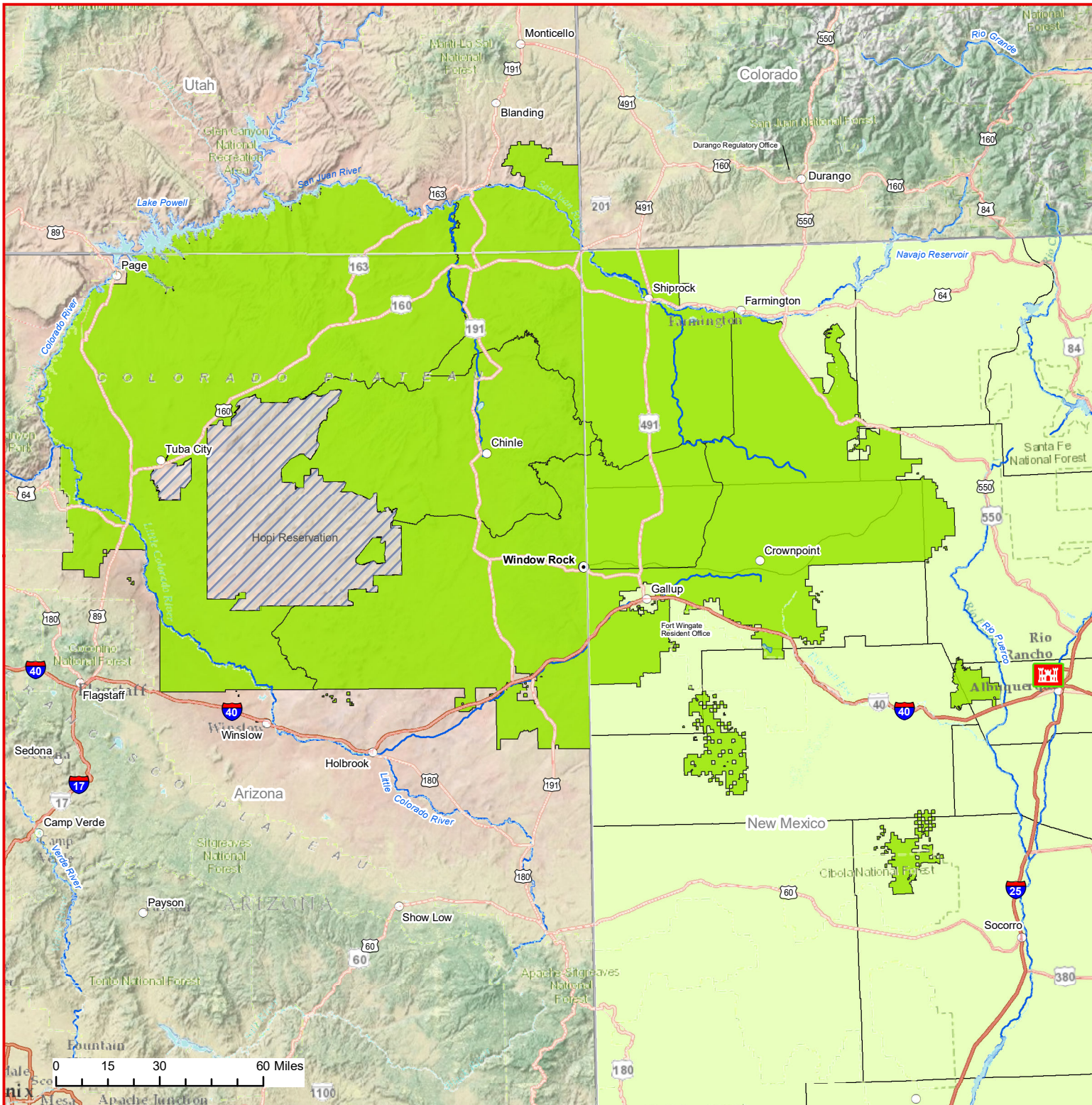
CHANGE:

On May 17, 2022, Navajo Nation requested in writing to the Corps that the Albuquerque District be designated the lead district on the Navajo Nation for issues and matters related to the function of the USACE's Regulatory/Permitting Program.

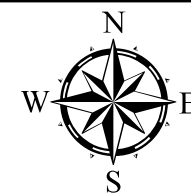
Partners, stakeholders, and the regulated public within the Navajo Nation will benefit from the change for the reasons described under the background paragraph above. The change is an internal reorganization of Regulatory Program boundaries only and the change should be seamless. Other Corps mission area boundaries will not be changed.

Please contact the following individuals for more information or questions about this announcement.

Christina Schroeder, Albuquerque District, Regulatory New Mexico/Texas Branch Chief,
Christina.L.Schroeder@usace.army.mil, 505-342-3374



- Legend**
- City
 - ⊙ Navajo Nation Capital
 - River
 - Interstate Highway
 - Highway
 - ▭ State Boundary
- Tribes**
- Navajo Nation
 - ▨ Hopi reservation; Los Angeles District
- SPA Offices**
- Albuquerque District Regulatory Office
 - New Mexico/ West Texas Regulatory Branch



ALBUQUERQUE DISTRICT
New Mexico/ West Texas Branch
Area of Responsibility
Contact:
SPA-RD-NN@usace.army.mil



U.S. ARMY CORPS
 OF ENGINEERS
 ALBUQUERQUE DISTRICT
 REGULATORY DIVISION