


Public Notice

SPA-2013-00433

Legend

 Project Location



Google earth

©2014 Google
Image Landsat

20 mi

Public Notice

SPA-2013-00433

Legend

Project Location



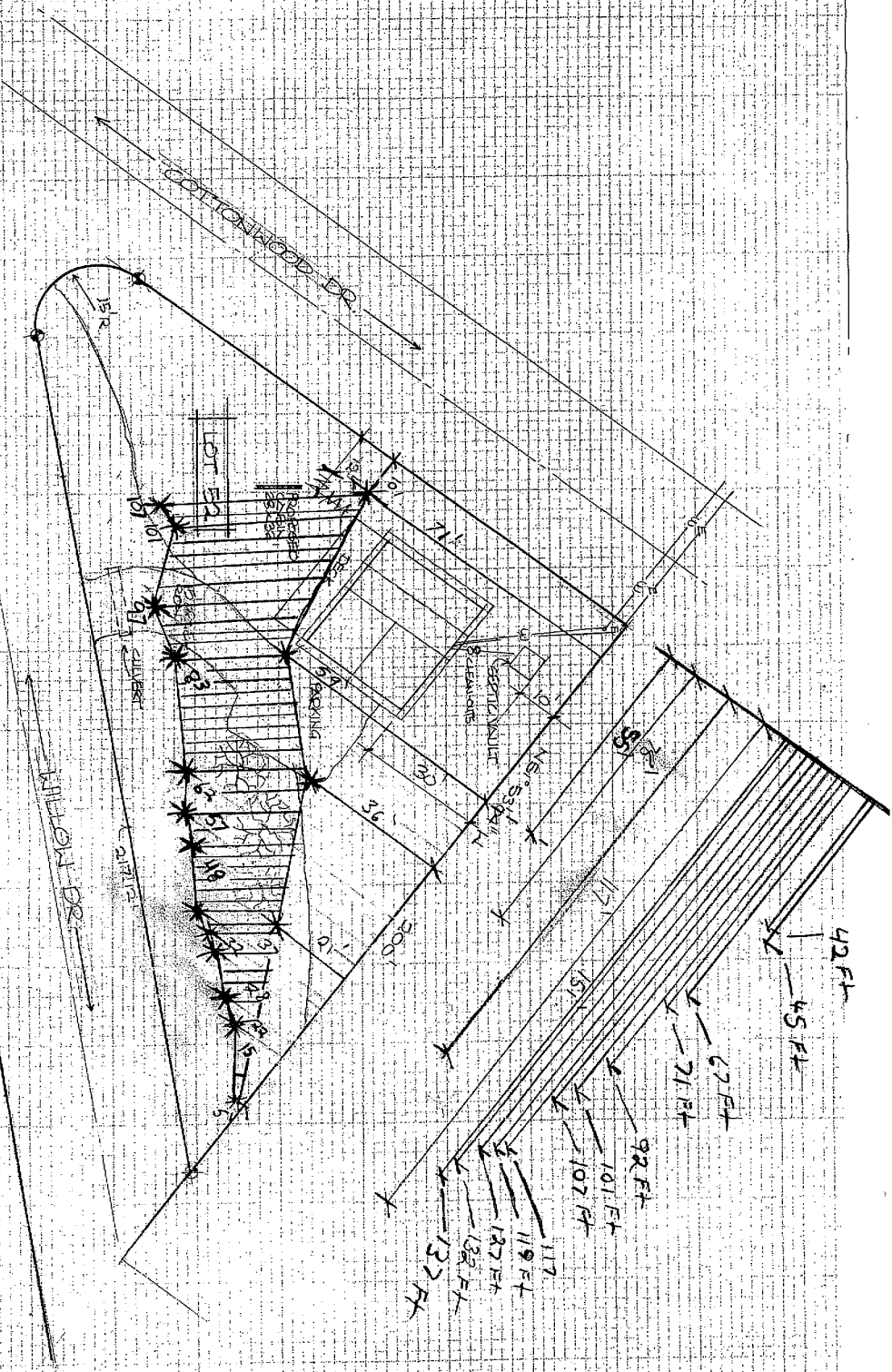
Google earth

© 2014 Google

500 ft

SITE PLAN

HORSA SUBDIVISION
 IN WETLANDS ADJACENT TO THE CONEJOS RIVER
 CONEJOS COUNTY, COLORADO



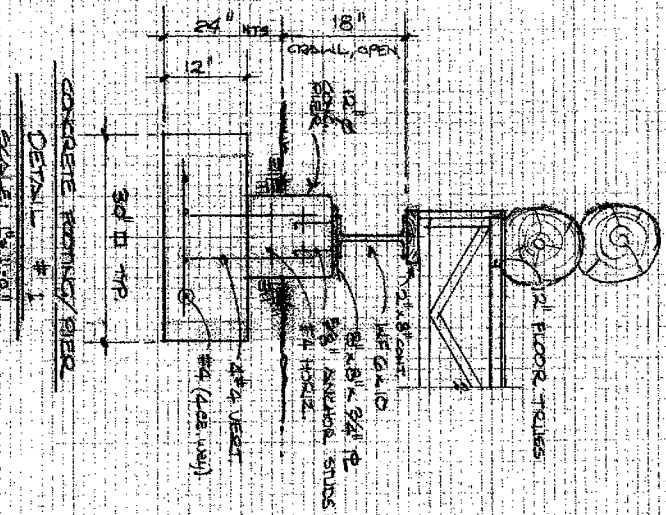
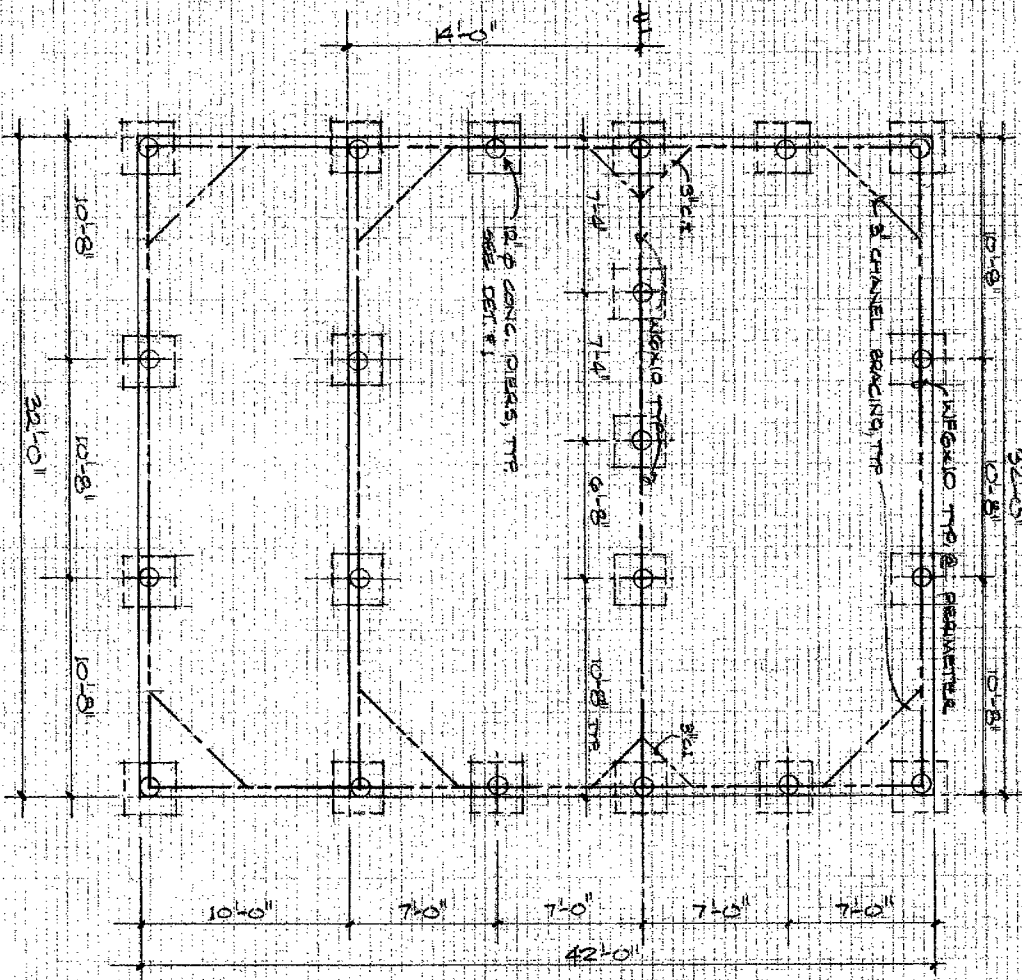
Wetland delineation marker

* Wetland delineation marker

Note: Cabin will be situated 8 ft. north/northwest of current driveway parallel to Cottonwood at

MR & MRS ISAAC DEAN
 CONEJOS RIVER CABIN
 8-12

21



FOUNDATION PLAN
SCALE: 1/4" = 1'-0"

NO. 5 REBAR CLEAN

