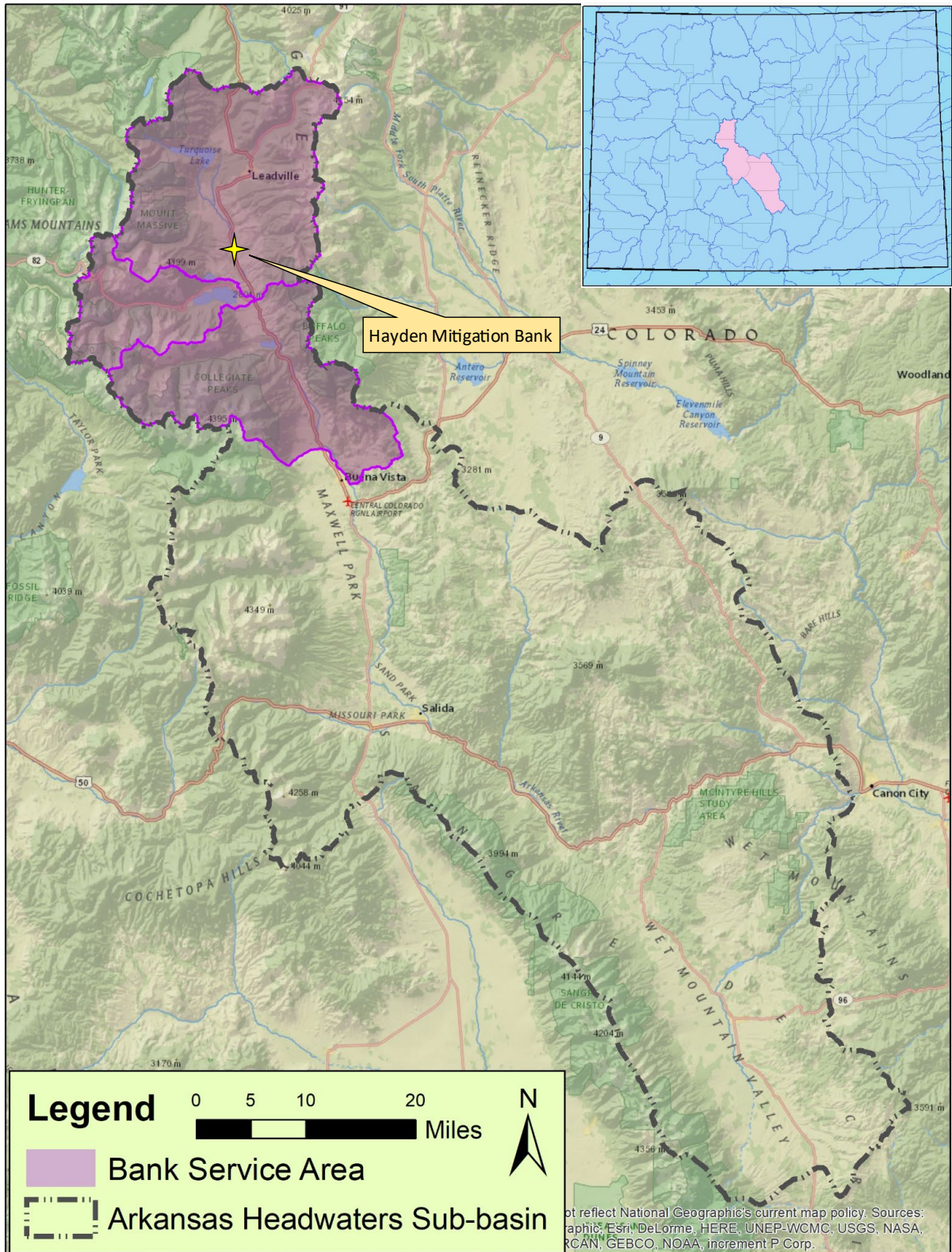
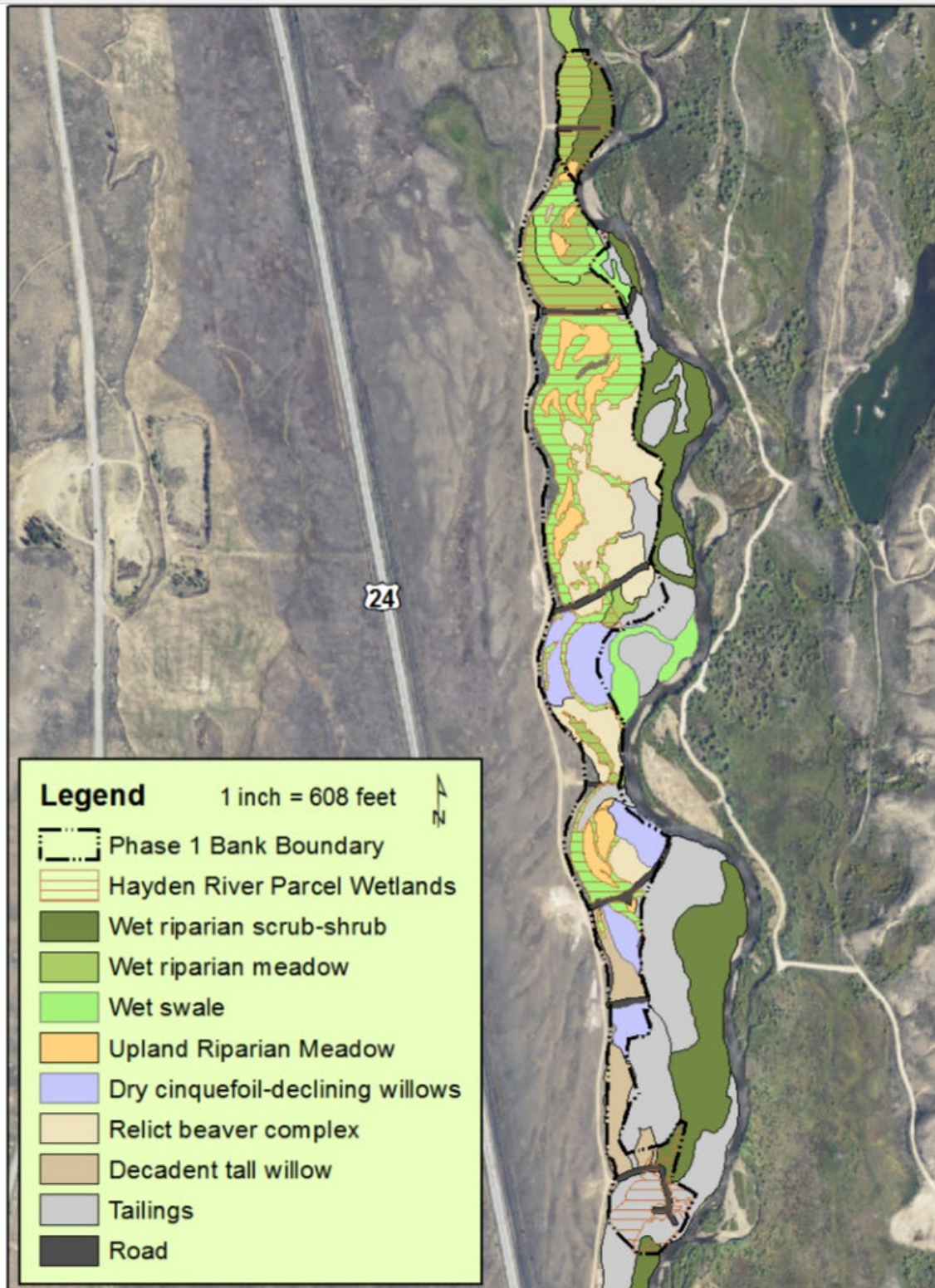


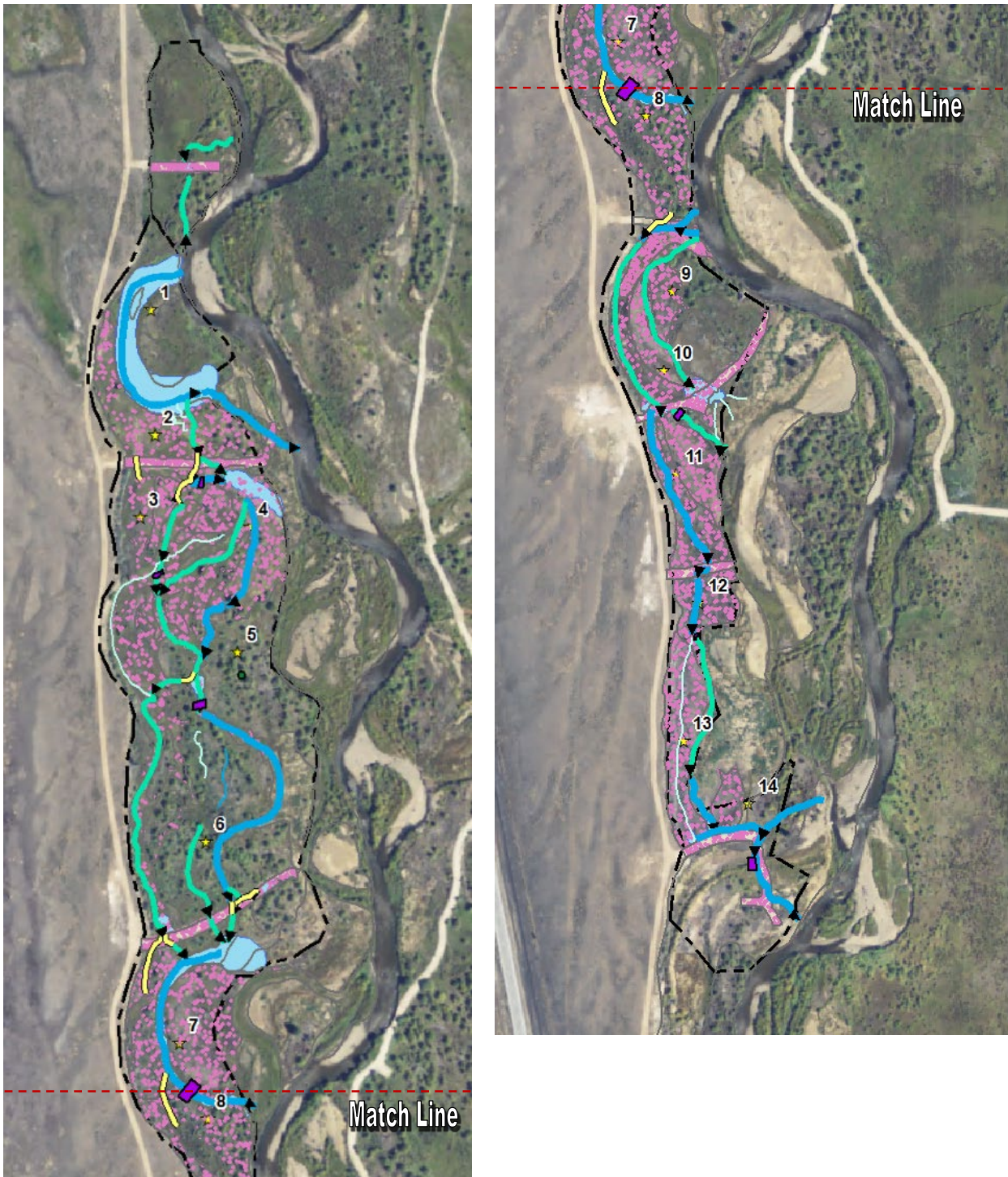
## B - 1 Map of the Bank's Service Area



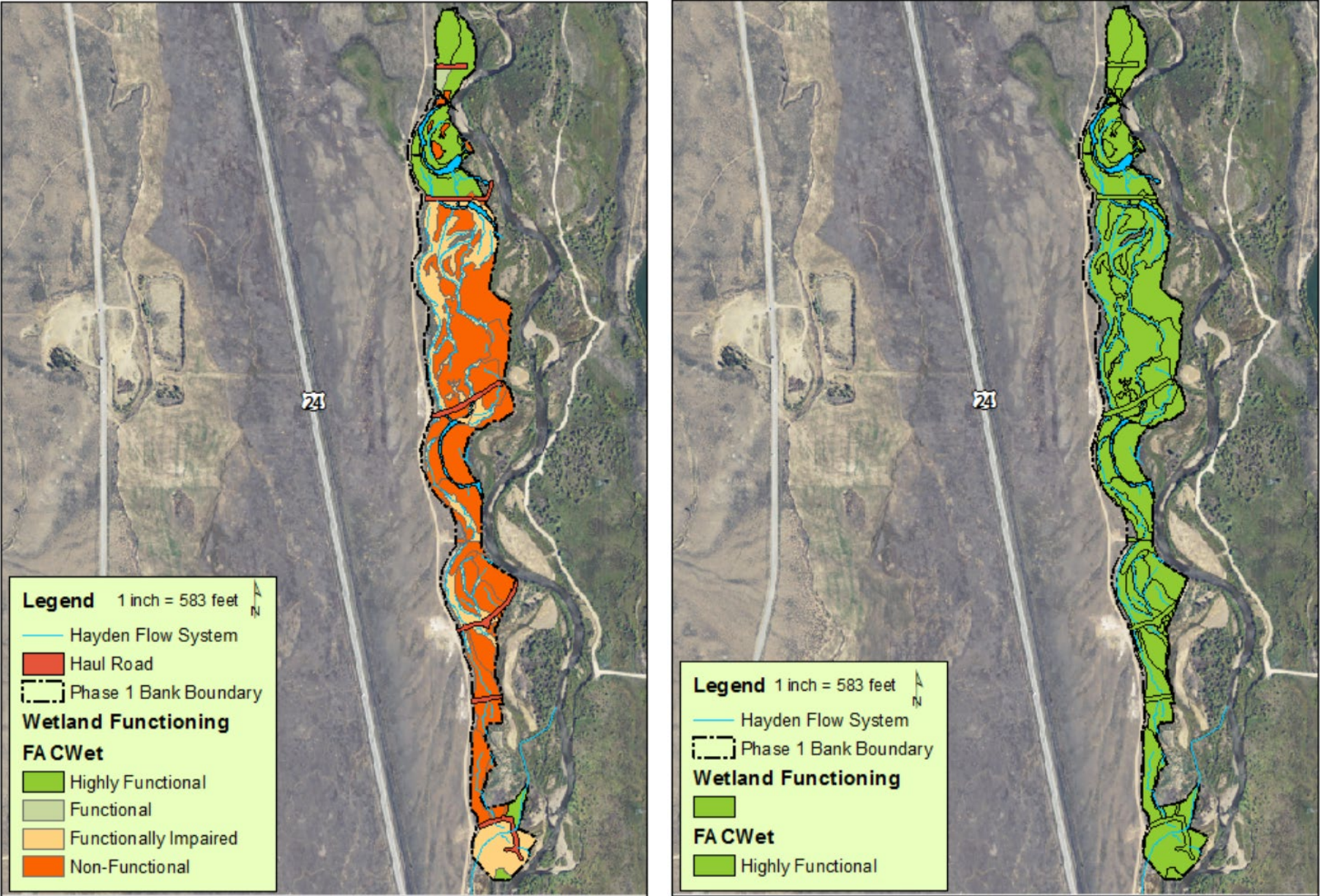
B 1 Map of the Arkansas Headwaters HUC 8 Sub-basin which is the proposed service area for the Hayden Bank.

**Fig. C-1.1.1.** Detailed mapping of wetland and riparian habitats within and adjacent to the Hayden Bank.





**Fig. C-1.2.1.** An illustration of the predicted as-built configuration of the Hayden Bank. Arrows indicate pathways of flow whose importance is symbolized by the size and color of the arrows. Purple polygons represent potential check dam locations. Yellow lines show the locations of connector channels to be cut. Pink dots represent the locations of willow plantings. Within the various zones of the Bank, dots are distributed randomly in this figure, but at the actual density prescribed in the planting plan.



**Fig. C – 1.2.2.** A comparison of pre-restoration functional condition versus predicted post-restoration condition based on FACWet evaluation. Following restoration bank habitats are anticipated to be uniformly highly functioning.