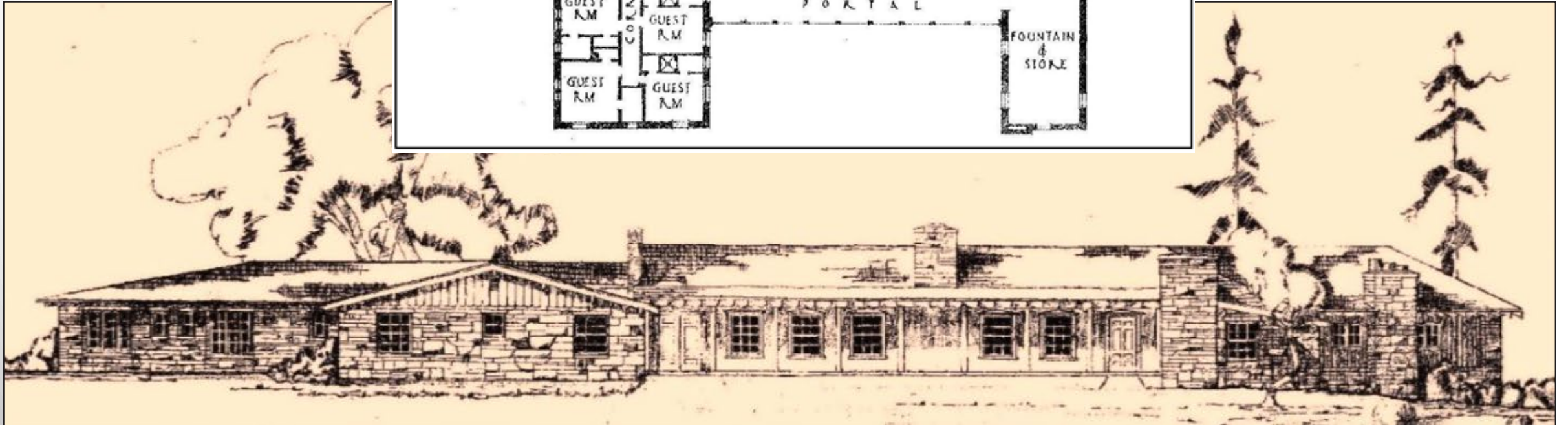
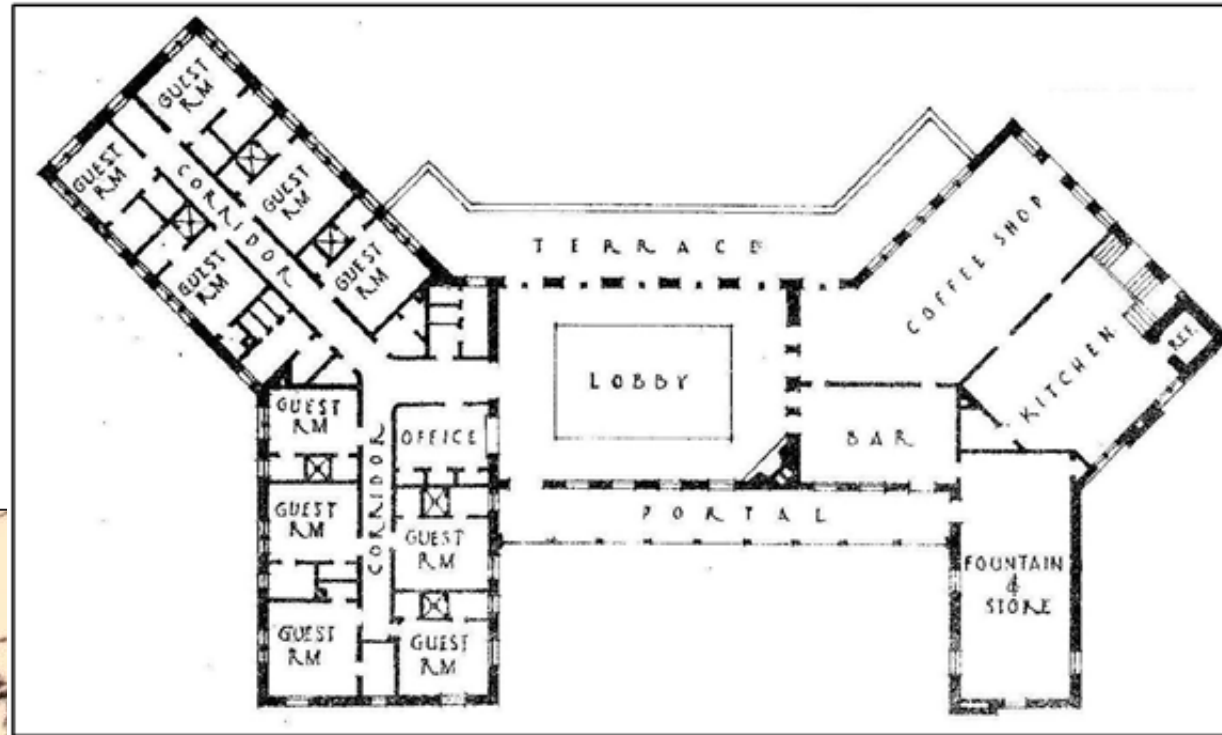
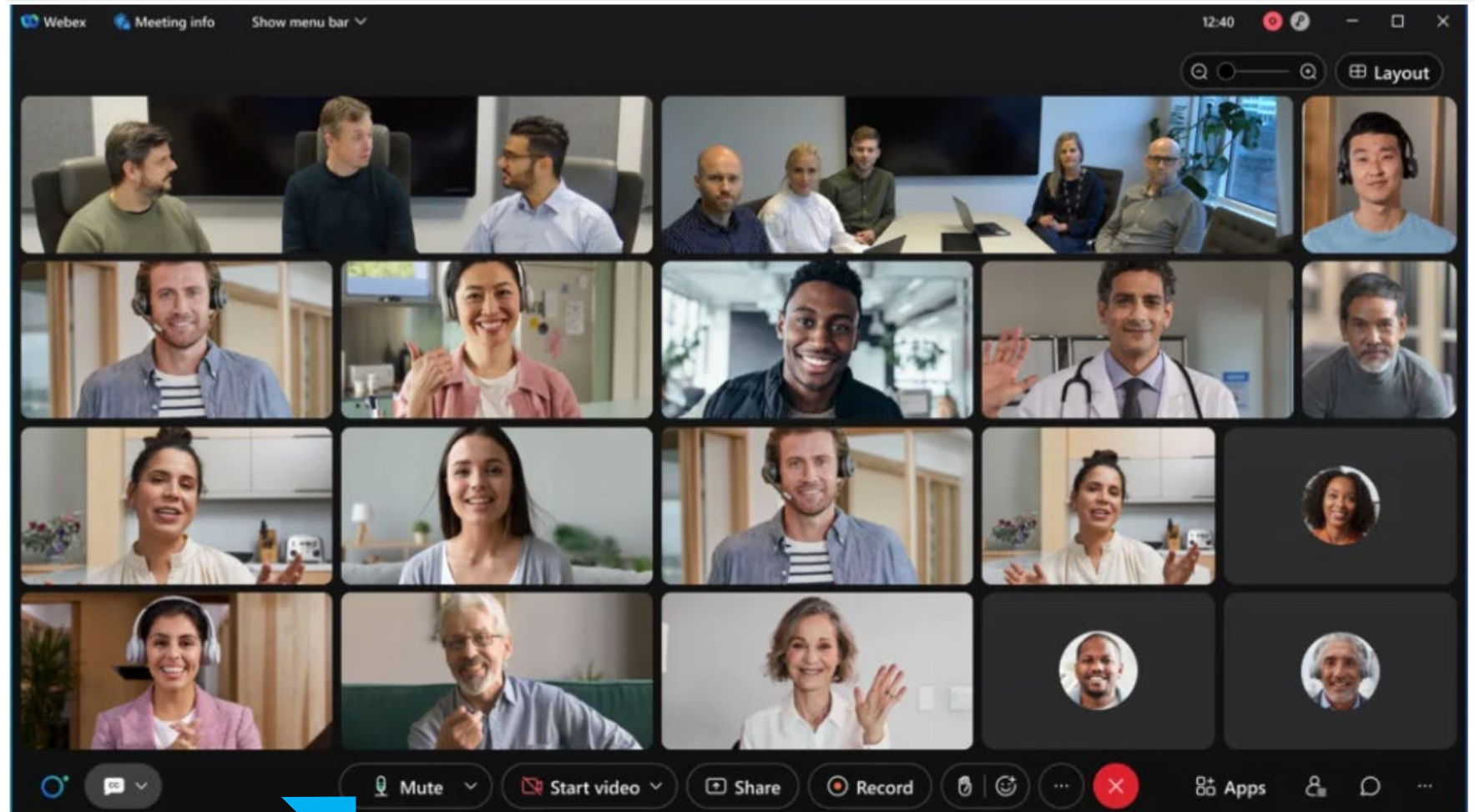


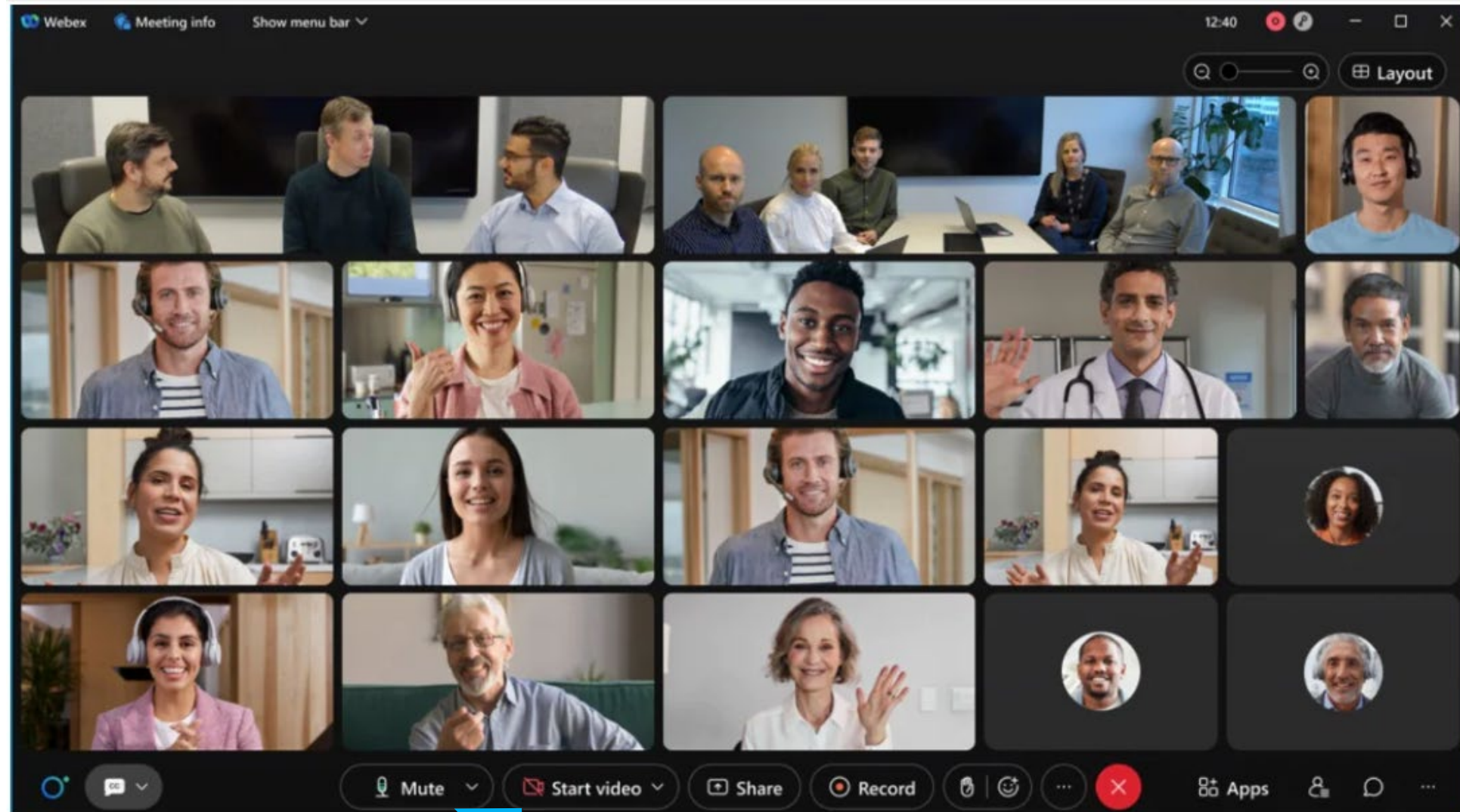
CONCHAS LODGE





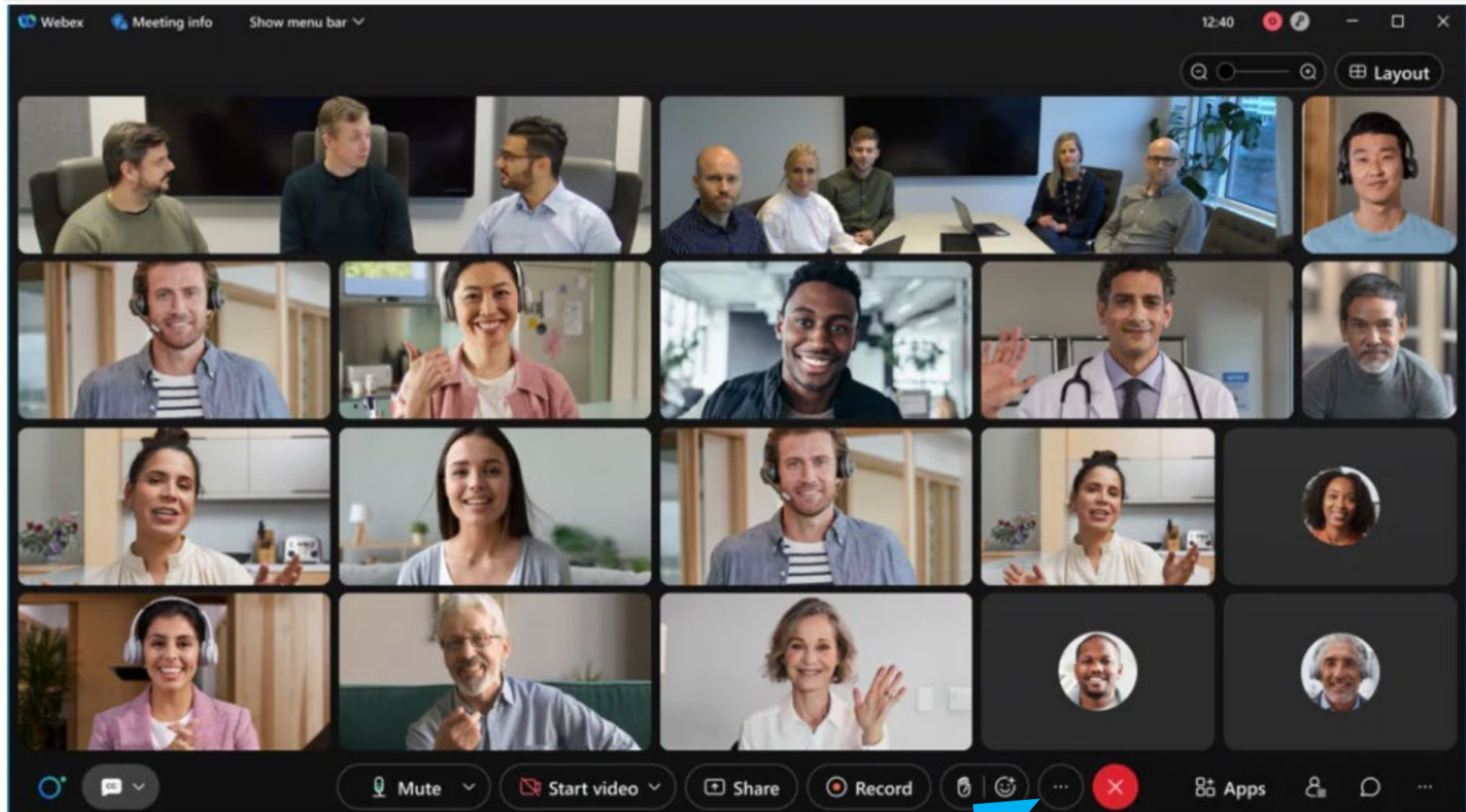
To mute/unmute yourself, click here.
***Reminder that you may need to “double
unmute” if you’re using your phone for audio.

*Para silenciarse/activarse, haga clic aquí.
***Recordatorio de que es posible que deba "activar el
silencio dos veces" si está usando su teléfono para audio.*



To turn your video
on/off, click here.

*Para activar/desactivar su
video, haga clic aquí.*

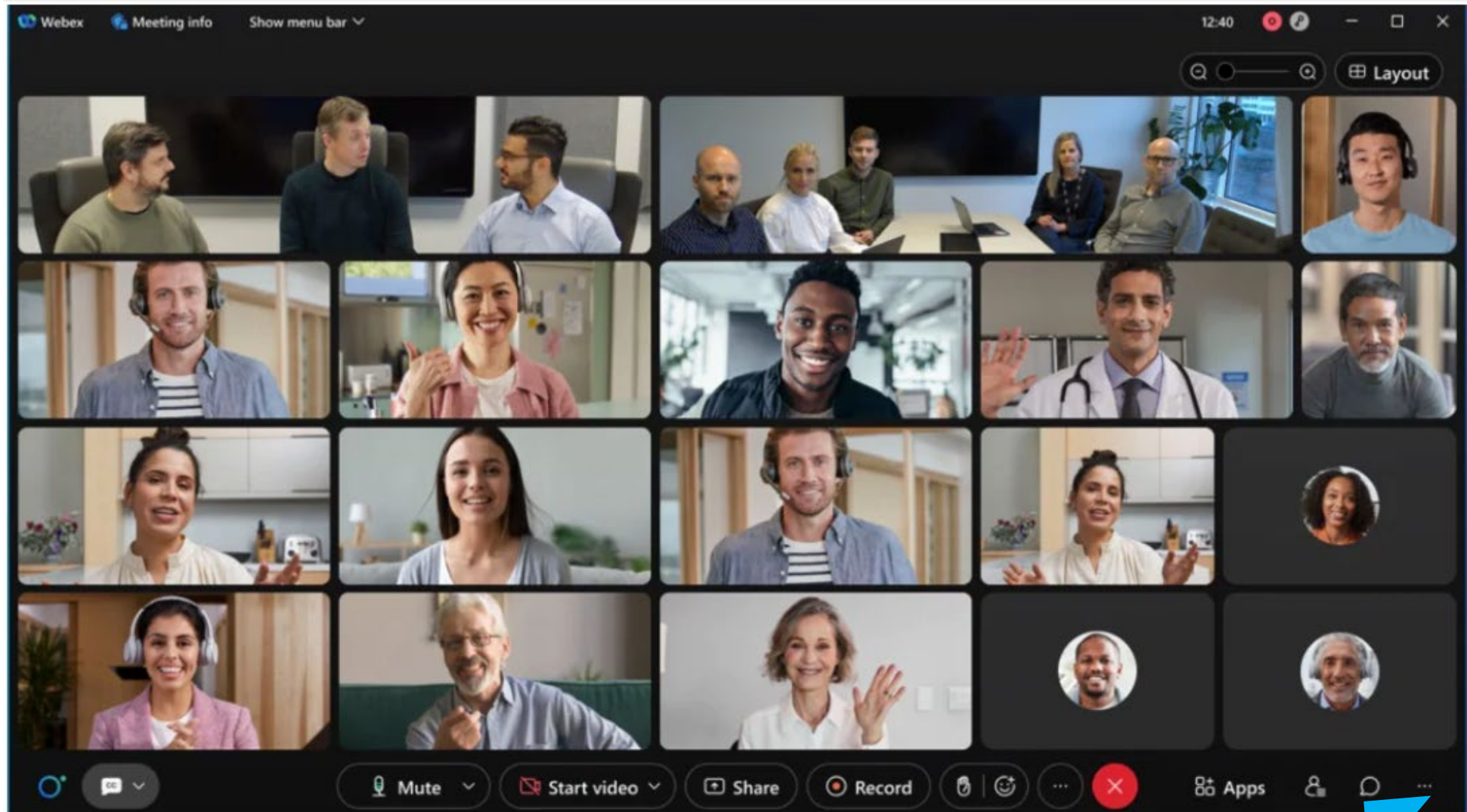


To raise your hand,
click here.



*Para ver quién está en la
llamada, haga clic aquí.*

To see who all is on the call,
click here.



*Para abrir el chat,
haga clic aquí.*

To open the chat, click
here.

GROUND RULES

- Please “raise your hand.”
- Please keep comments respectful. It’s okay to disagree, but everyone has the right to express their ideas.
- We encourage typing comments and questions in the chat.
- We will respond to items in the chat in order.
- This meeting is focused on our proposal for the lodge; we will not be addressing other topics at this time.



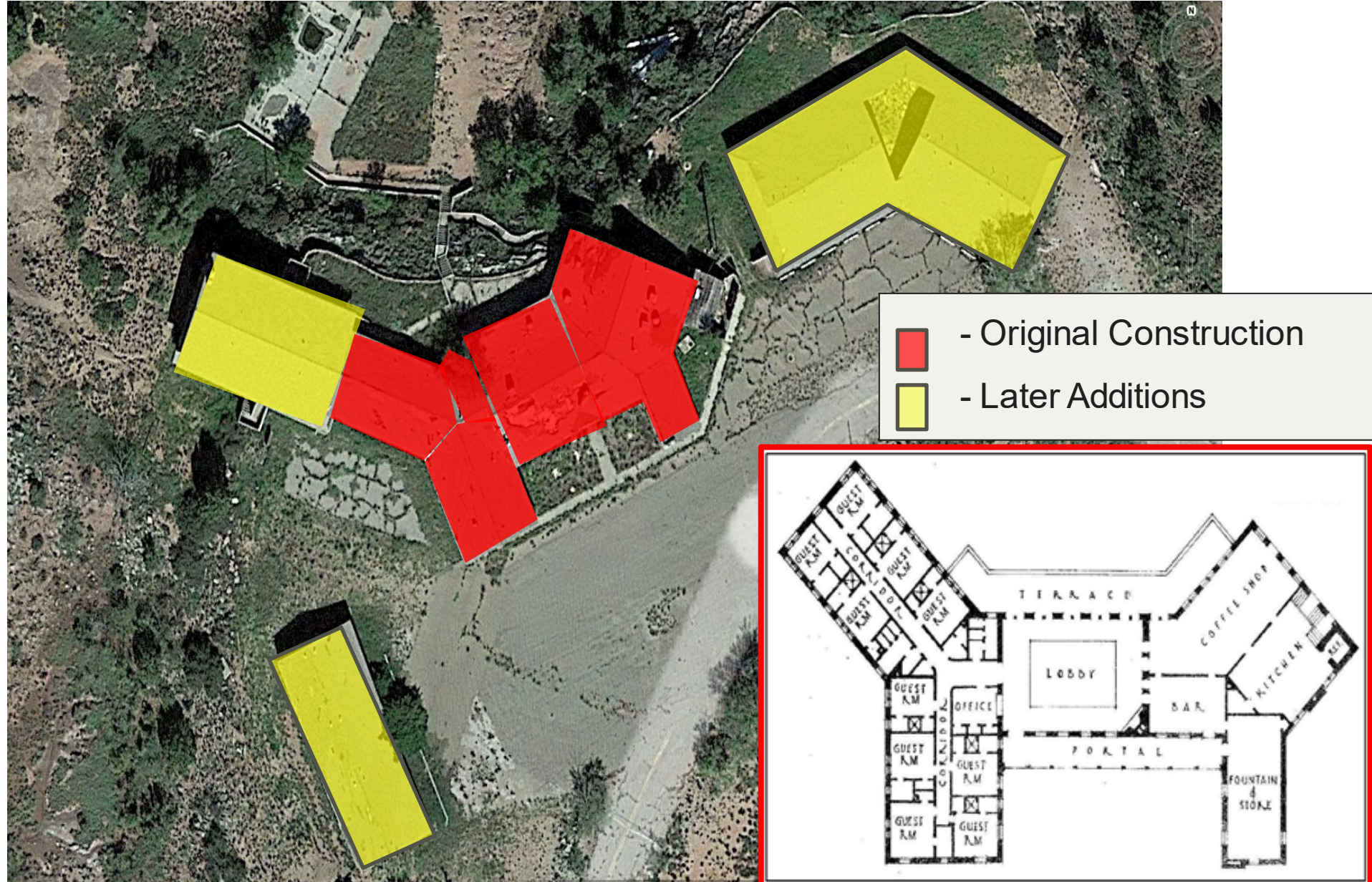
HOW WE GOT HERE

- The Corps has long wanted to improve the deteriorating condition of Conchas Lodge. We have recently applied for, and received, funding through the Bipartisan Infrastructure Law to stabilize the building.
- Prior to application for funds, we sent out a scoping letter in 2019 asking for comments about ways we might partially rehabilitate or dismantle the Lodge.
- We received 38 written and emailed comments during that scoping phase.
- Most people wanted the Lodge restored as much as feasible. A few people wanted the area restored to natural condition.
- Many people wanted the Corps to provide increased amenities. A restaurant, improved camping facilities, cabins, showers and restrooms for campers were frequently mentioned.
- The importance of the Lodge to the community and a sense of loss of what was once a thriving establishment were frequently mentioned.



HOW WE GOT HERE

- The Corps team consisting of engineers, archaeologists, and planners is developing conceptual plans to revitalize the building.
- We have developed a multi-phase approach that stabilizes the structure with available funding and provides for additional aesthetic improvements that may be carried out at a later date if additional funding is received.

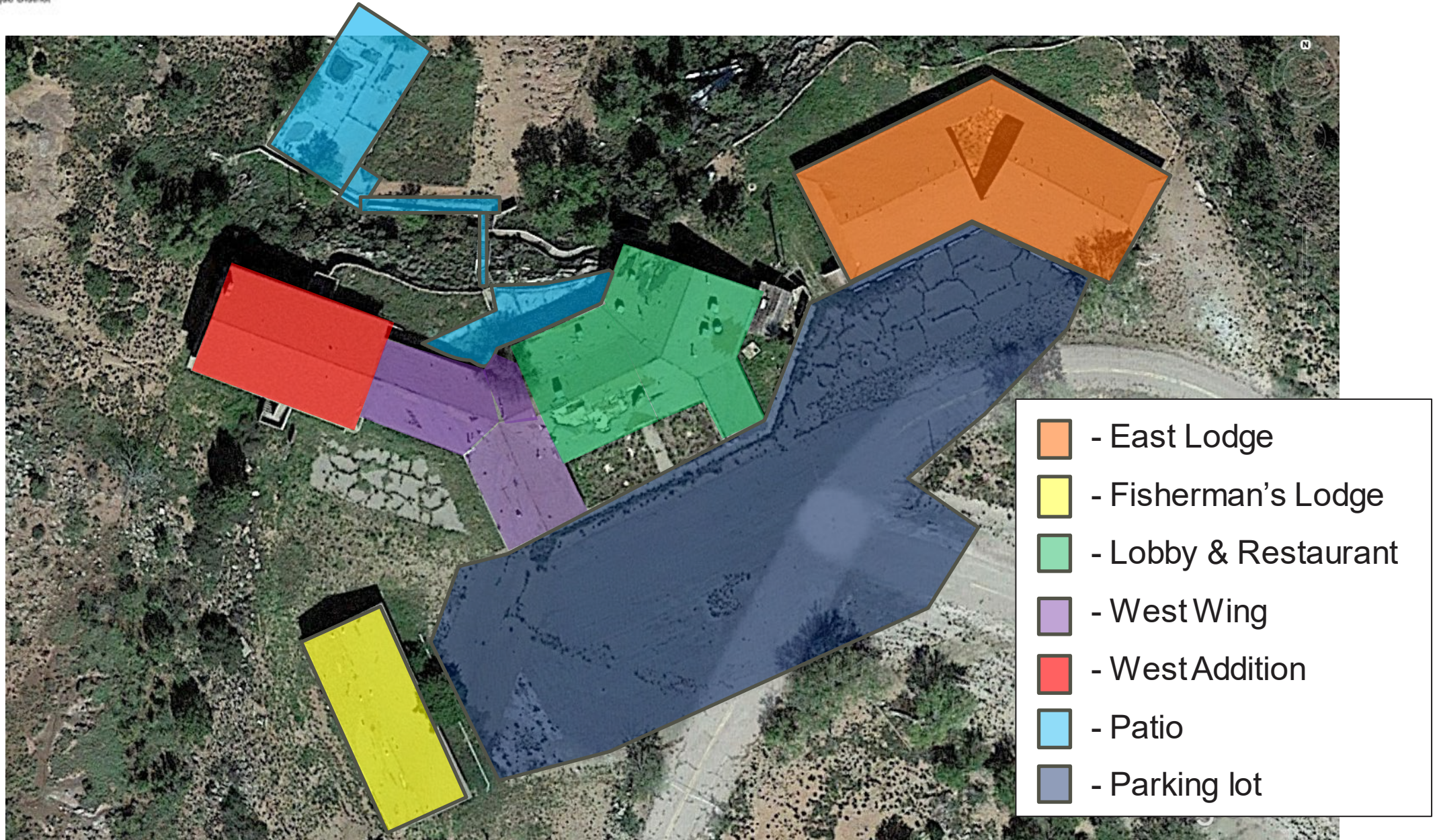


CONCHAS LODGE

- The original Conchas Lodge was built in 1942 by the Civilian Conservation Corps (CCC) as part of the New Deal. Other sections were added between the 1940s and 1960s.
- Conchas Lodge played a key role in history of Conchas Lake and the surrounding community.
- Eligible for listing on the National Register of Historic Places
- Currently in unusable condition, requiring intervention
- US Army Corps of Engineers is planning work to renovate important parts of the Lodge complex, while removing unsafe and deteriorating elements.





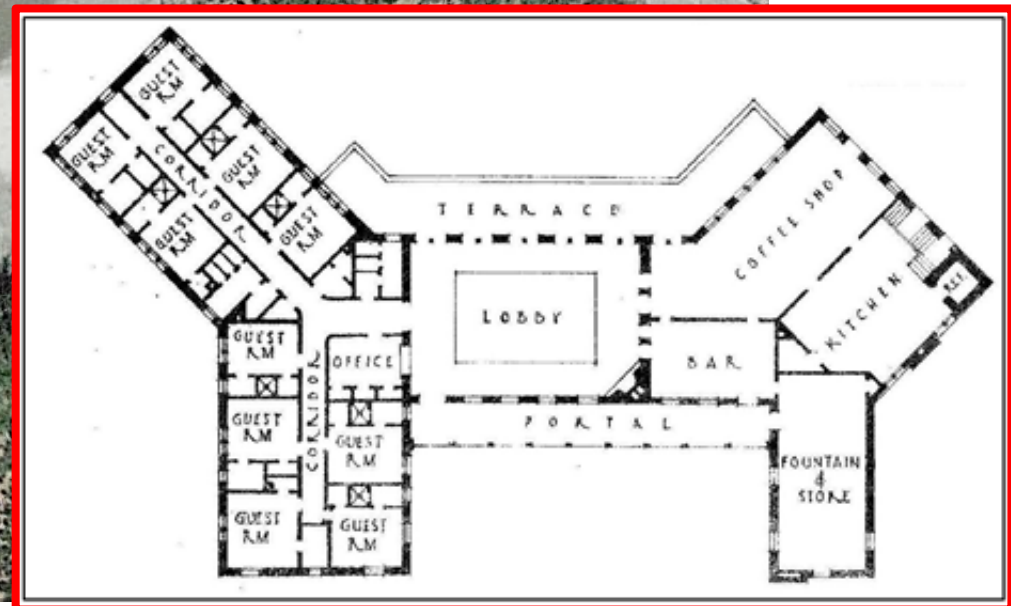
SITE OVERVIEW



SITE OVERVIEW





-  - Original Construction
-  - Later Additions



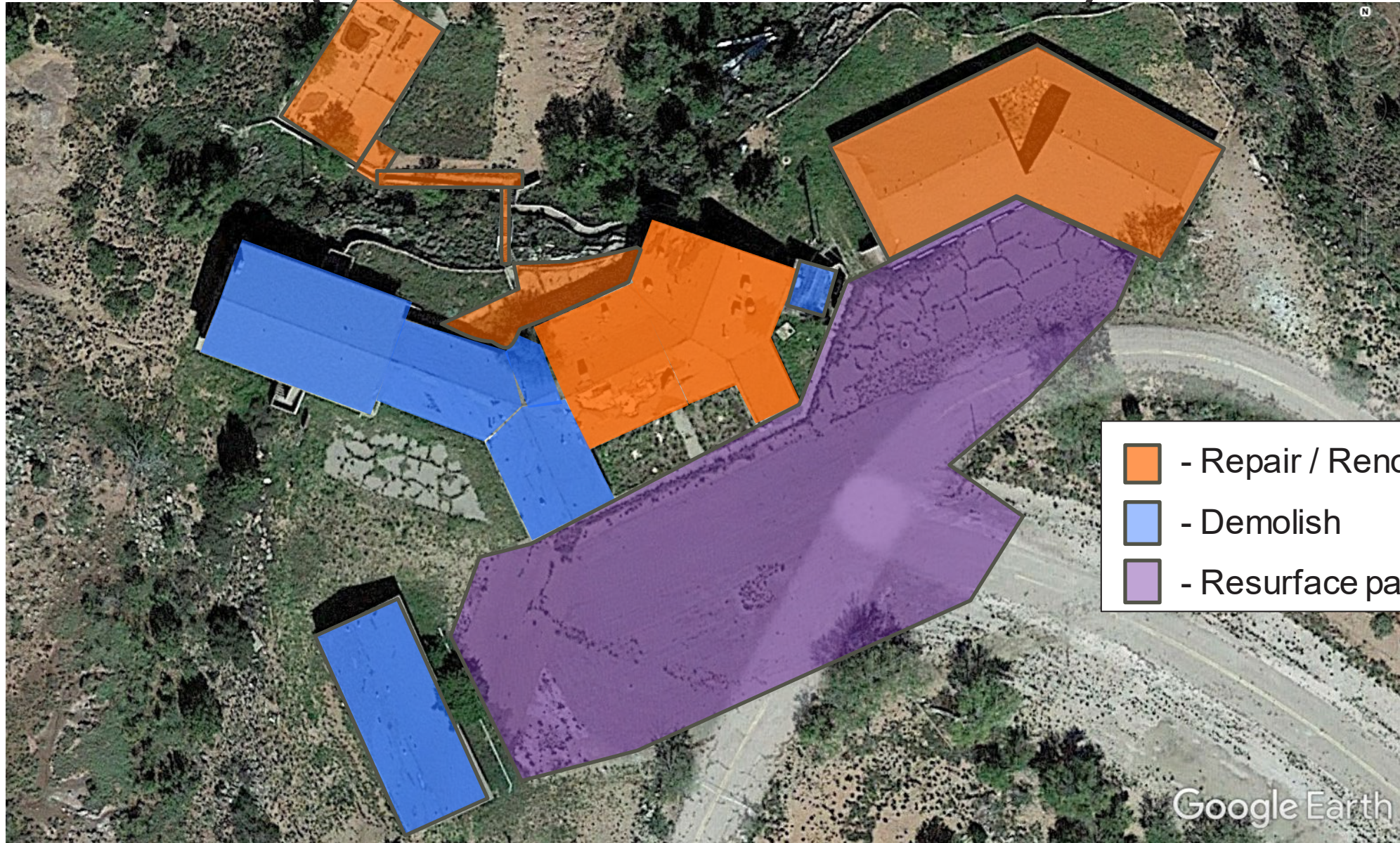
PROPOSED CHANGES (AT MINIMUM)






-  - Repair / Renovate
-  - Demolish

GOAL: To save and reuse the public portions of the original Lodge (Lobby and Restaurant), while removing unsafe and non-original structures

PROPOSED CHANGES (IF FUNDING IS AVAILABLE)

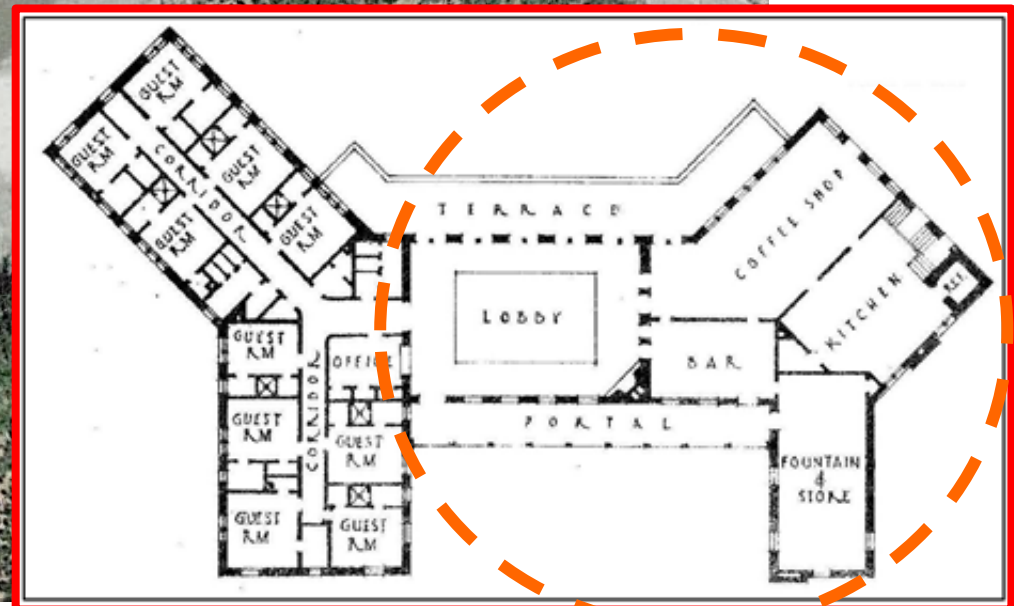


-  - Repair / Renovate
-  - Demolish
-  - Resurface pavement

RENOVATE LOBBY AND RESTAURANT



- Construct new exterior wall on west side of main room using salvaged stone cladding
- Revitalize public gathering spaces





U.S. ARMY



US Army Corps
of Engineers ©
Albuquerque District



STRUCTURAL MEASURES

- Save fireplace and vigas in main area.
- Reroof remaining structure.
- Replace or repair damaged and rotted structural members.
- Remove equipment that can't be salvaged (HVAC, non-historic fixtures, appliances, etc.).



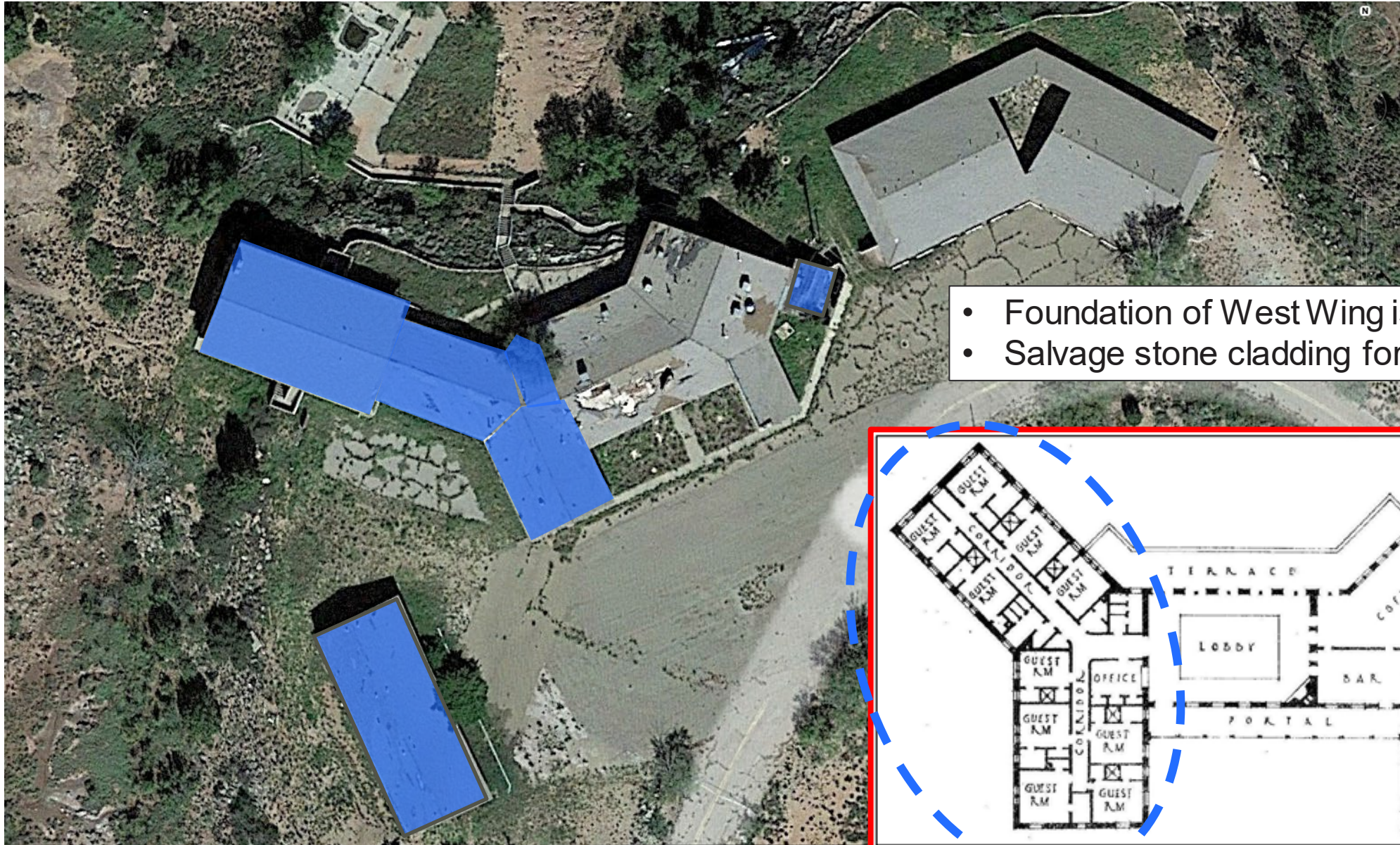


ADDITIONAL ACTIONS (If funding is available)

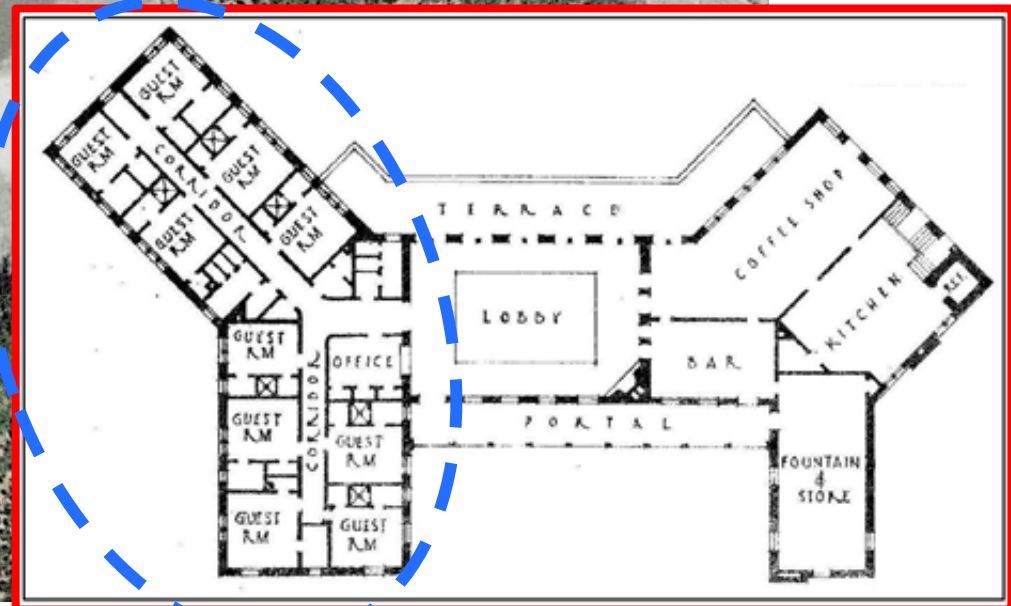
- Replace flooring throughout remaining areas
- Replace windows and install security measures
- Replace Electrical, HVAC, and finishes
- Renovate bathrooms
- Preserve bar area



DEMOLISH WEST WING AND ADDITIONS



- Foundation of West Wing is unsound
- Salvage stone cladding for reuse



DEMOLISH FISHERMAN'S LODGE



- Demolish building and foundation
- Cap utilities

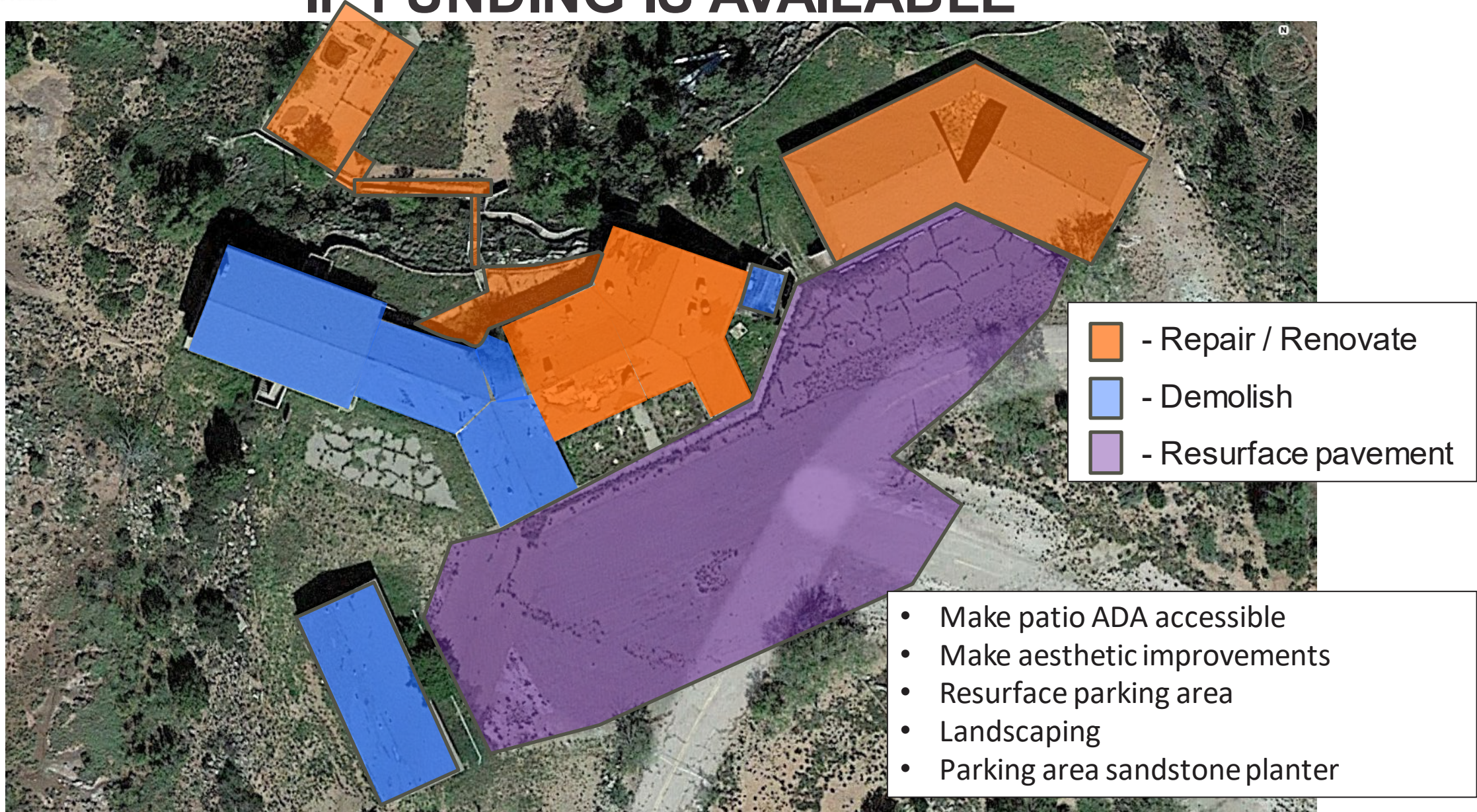
REPAIR EAST LODGE



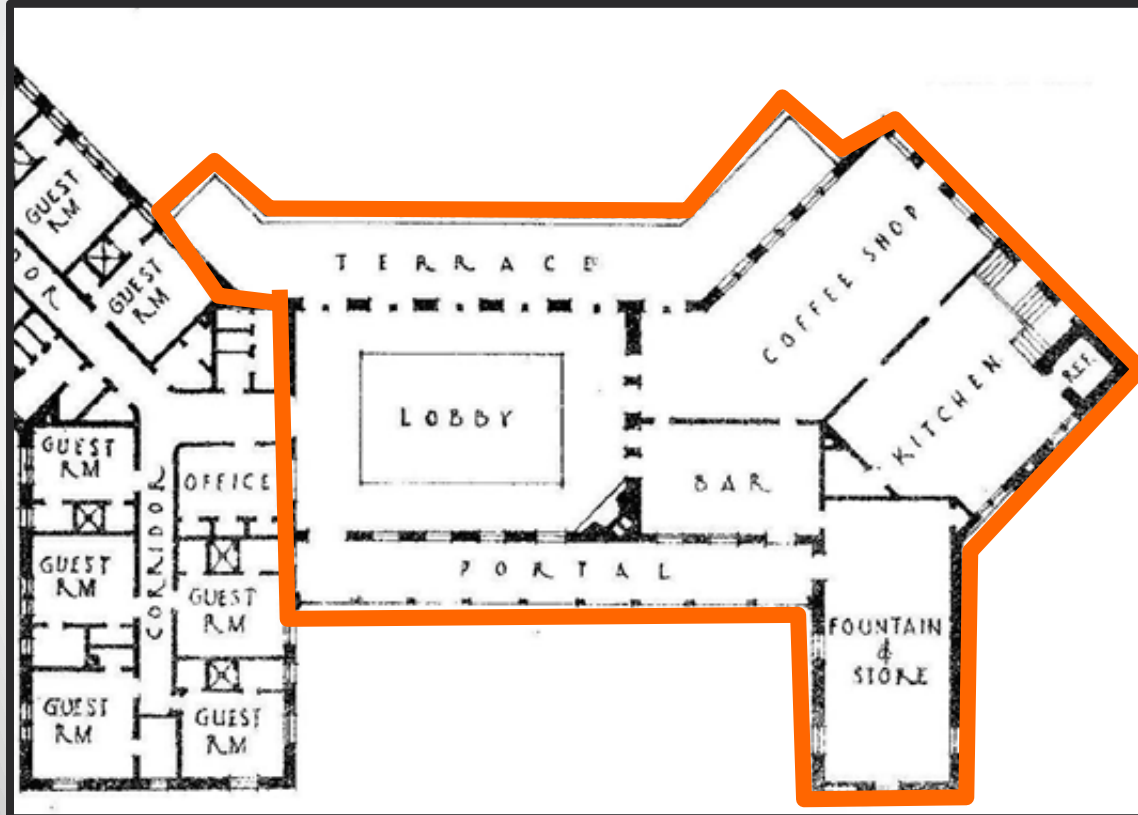
- Repair East lodge for future use
- Bring up to current code
- No structural repairs anticipated



ADDITIONAL TASKS IF FUNDING IS AVAILABLE



SUMMARY



GOAL:

- To save and reuse the public portions of the original Lodge (Lobby and Restaurant), while removing unsafe and non-original structures

WE NEED YOUR INPUT!

- What is important to you about the **history** of the Lodge?
- What is important to you about the **future** of the Lodge?
- What do you like/dislike about the proposed plan to partially renovate the Lodge?
- What else do you want us to know about the Conchas Lodge?

CONTACT US at ConchasLodge@usace.army.mil